



MONTHLY REPORT

UNIVERSITY OF RICHMOND
WELL-BEING CENTER & QUEALLY
ATHLETICS CENTER

JUNE 2020

Barton Malow Builders

Authored by: Eric Follo



TOP ACTIVITIES FOR JUNE

- Completed Spider Hall masonry wall
- Continued south masonry activities
 - Completed southwest limestone arches
 - Began Bay window elevation limestone
- Continued slate roof installation
- Continued ceiling/soffit framing and concealment
 - 2nd floor ceiling tile installation
- Sheetrock installation, finishing and prime painting throughout
 - Began practice court wall and ceiling paint
- Continued ceramic tile installation
- Set hydro-therapy pools
- Installed Kitchen hoods
- Completed Millhiser floor refinishing
- Poured new concrete ramp into Weinstein
- Set new transformer for permanent power
- Began air handling unit startup
- Began final grading activities at south end of site
- Relocated project trailer from site to Millhiser parking lot

CONTRACTORS ON SITE

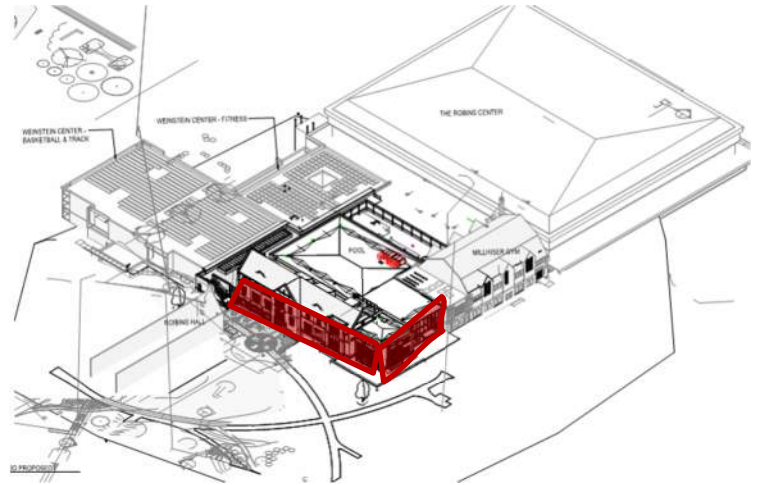
CONTRACTOR	TRADE
ETEC	Mechanical & Plumbing
Commercial	Electrical
CT Purcell	Utilities & Earthwork
Piedmont	Concrete
Masonomics	Masonry
Atlantic Constructors	Fire Suppression
Ocean Drywall	Framing & Drywall
Roof Services	TPO & Slate Roofing
MP Barden	Painting
Jefco	Storefront
Caffes-Steele	Aluminum Windows
Pompei Inc.	Ceramic Tile

AERIAL DRONE PHOTO

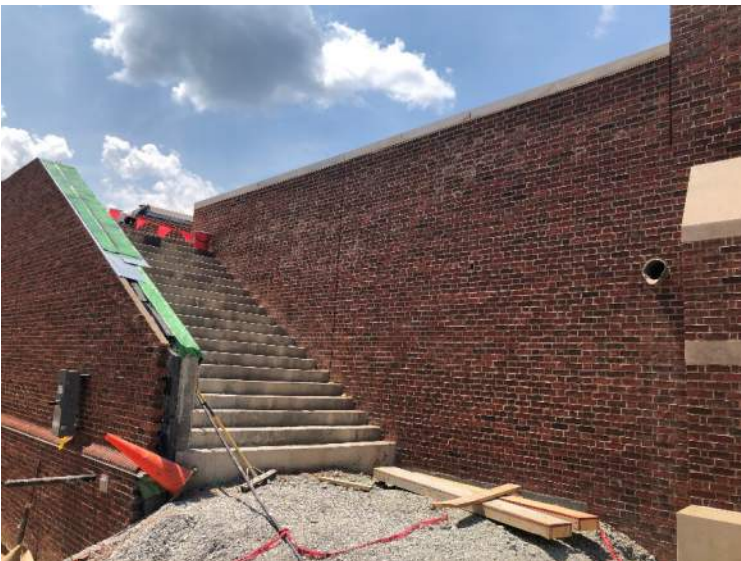
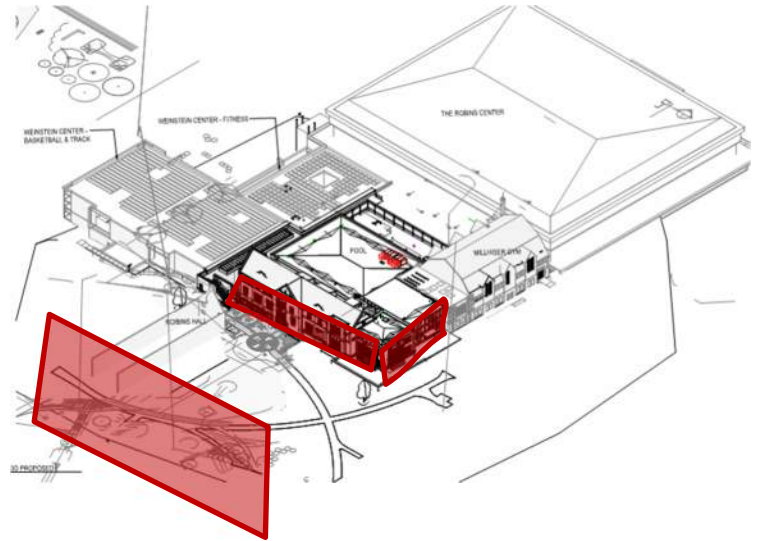


PROGRESS PHOTOS

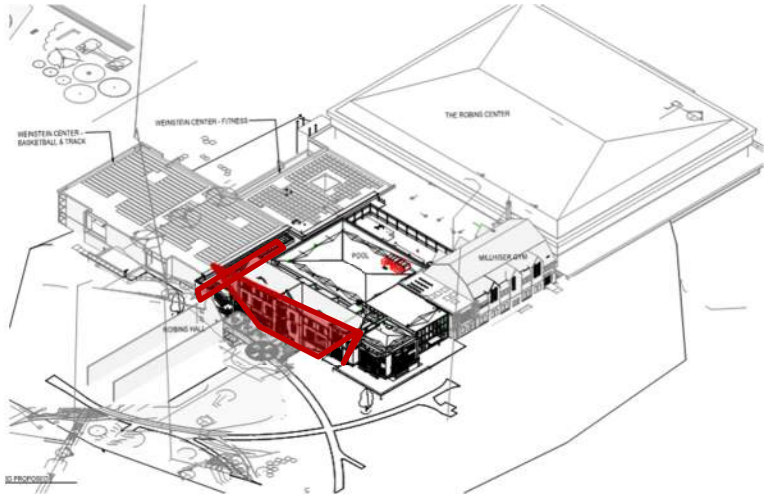
Exterior Progress



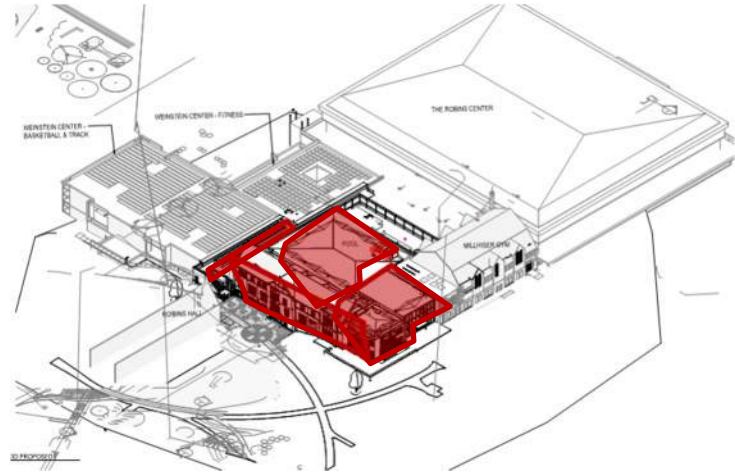
Exterior Progress Continued



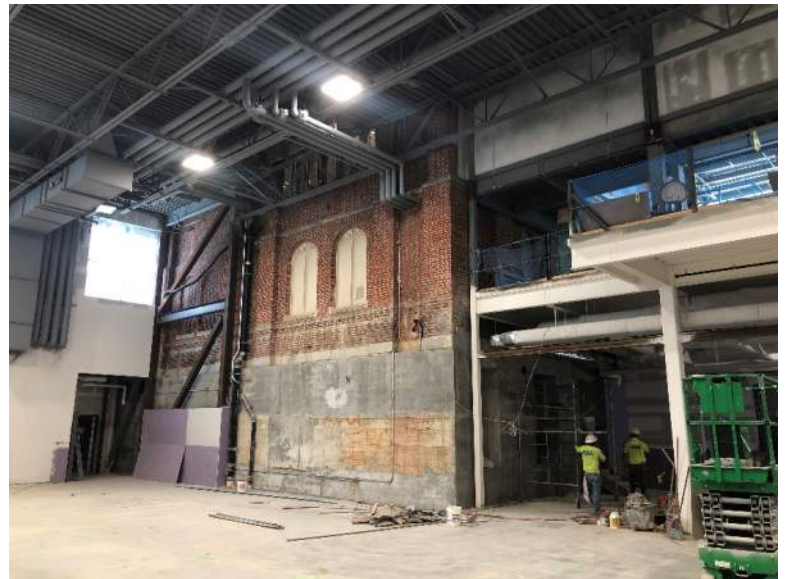
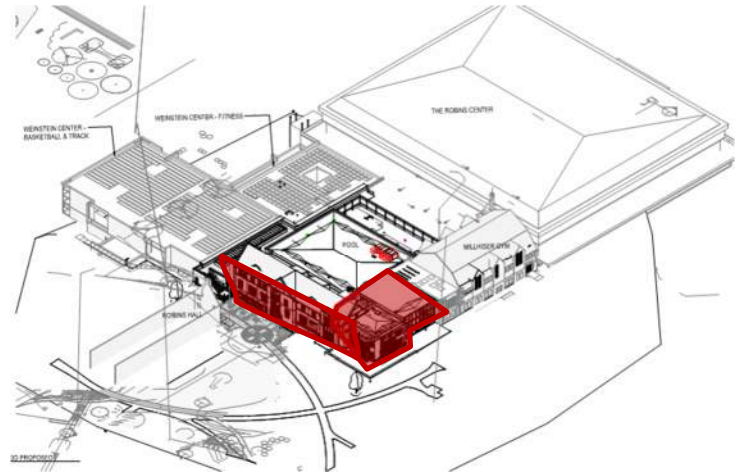
Interior Progress



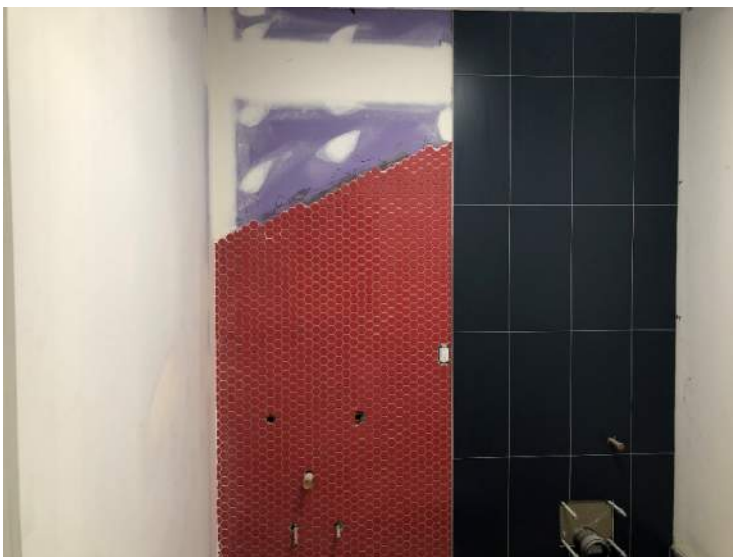
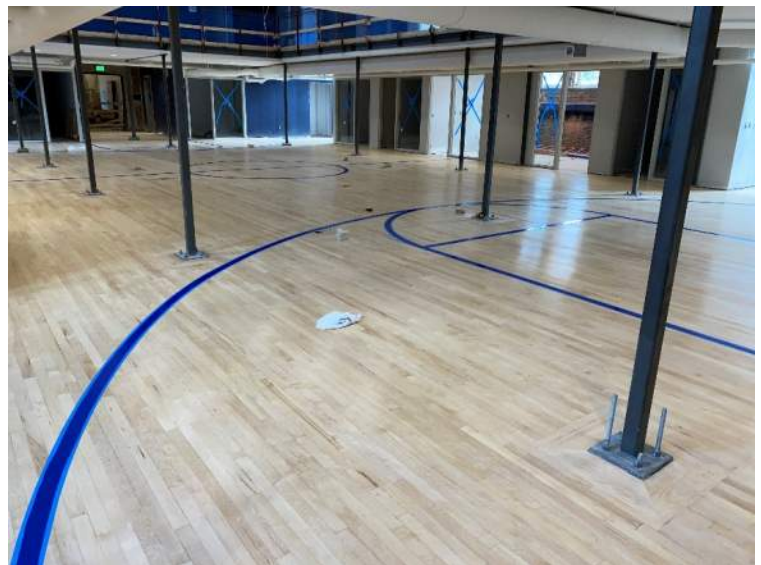
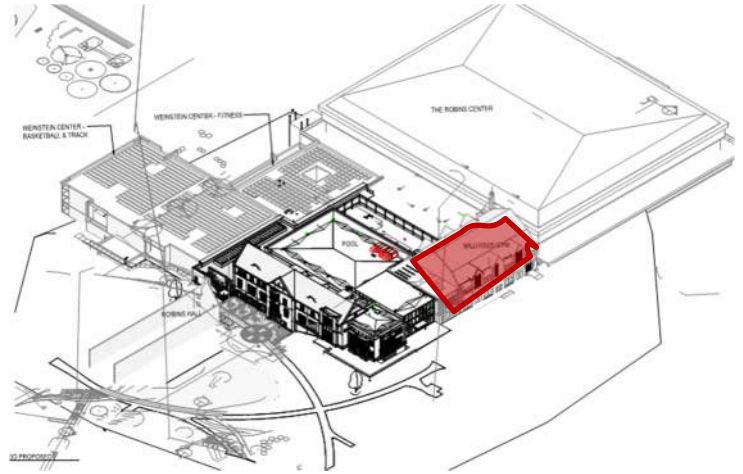
Interior Progress Continued



Interior Progress Continued



Millhiser Progress



TOP ACTIVITIES FOR JULY

- Continue bay window masonry installation
- Continue slate roof installation
- Continue interior wall finishing and prime/painting
- Continue Ceiling framing and close-in
 - Kitchen/Café area
- Set walk-in cooler and freezer units
- Fixture/Finishes installation
- Continue ceramic tile installation
 - Locker rooms
- Begin carpet and vinyl tile installation
- Interior storefront installation
- Establish permanent power
- Complete passenger elevator installation
- Continue unit/system startup
- Practice court hardwood floor installation
- Install practice court acoustic baffles
- Begin Millhiser casework installation
- Set Millhiser skylight